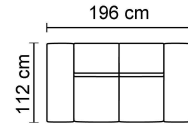
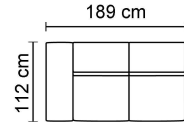


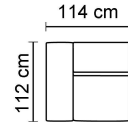
**Vers. 009**



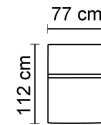
**Vers. 005**



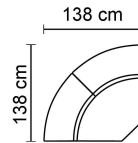
**Vers. LAF 018**  
**Vers. RAF 019**



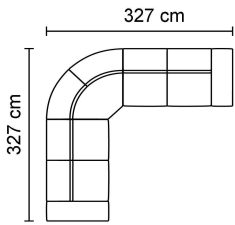
**Vers. LAF 000**  
**Vers. RAF 002**



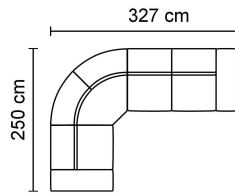
**Vers. 001**



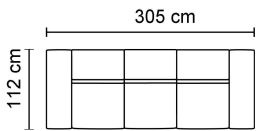
**Vers. 029**



**105 SECT.(18+29+19)**



**104 SECT.(00+29+19)**



**015 SECT.(00+01+02)**

This information is based on the latest product information available at the time of printing. The right to discontinue and make changes is reserved.

The sectional and motion pieces are shown as left hand.